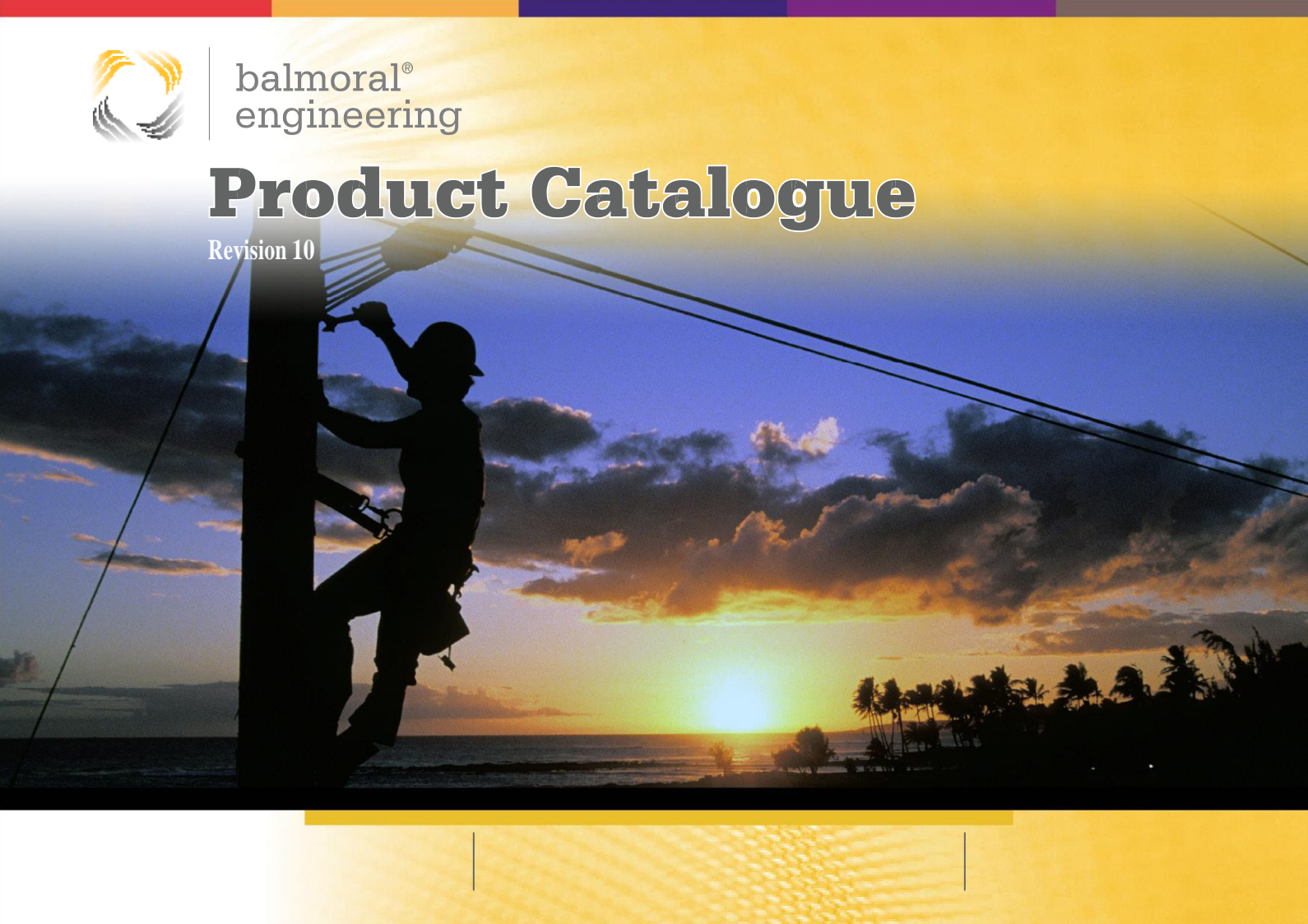




balmoral[®]
engineering

Product Catalogue

Revision 10

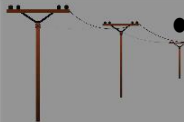




WARNING MARKERS



- Marine grade components



- Reduced line loading by design



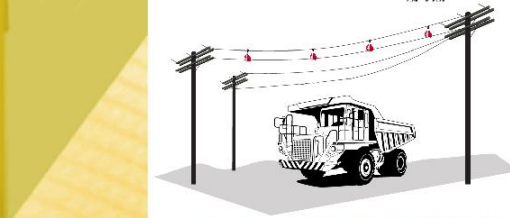
- Thermally tested



- UV Resistant



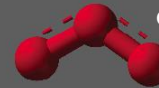
- Soft jaw protects cable and prevents creeping. Fits all lines from 2-50mm diameter



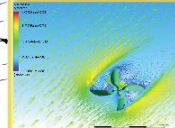
- Dielectric strength tested



- Snow and ice tested



- Ozone tested



- Wind tunnel tested



- Aerodynamic 3D design, rotates for high impact visibility from all angles of approach

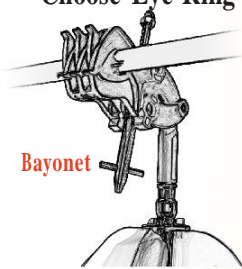


ROTAMARKA

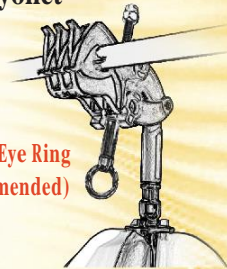


WARNING MARKERS

Choose Eye Ring or Bayonet



Bayonet



● Eye Ring
(recommended)

Warning Marker Drive Tool

WMDT | ~42 x 22m SS (works with Eye or Bayonet)



Can be installed from Bucket Truck
with Shotgun Stick (Eye version)



Recommended Products

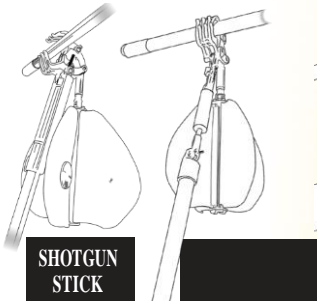
ROTAMARKA **
Install/uninstall
tool - universal - Eye

LLCR-E | ~300 x 55

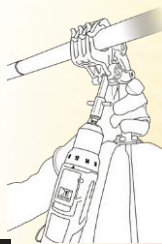
Can be installed from ground
with Telescopic Stick and
LLCR-E Tool (Eye version)



Installation Options



SHOTGUN
STICK



DRIVER



SCREWDRIVER

(Eye)
or
(Bayonet
+
WMD)

This is a guide only, consult our Instructions For Use for further details.
Perform a risk assessment prior to undertaking any work.
Only to be used by industry certified personnel.
Must comply with all relevant work practice rules and industry guidelines.

*4Nm

tightening torque

**Image representative only



ROTAMARKA



WARNING MARKERS

Recommended Products

Warning Marker - Part Number Legend

Example :: WM-CS-B-1A-RW

A B C D E

A - Product type: WM (Warning Marker)

B - Line attachment: CS (Clam Shell)

C - Hot Stick Attachment: B/E (Bayonet or Eye Ring)

D - Style of warning device: 1A/1B/1C/1D/1E (Bushing/Flag/Bearing/Unit Jt/Mini)

E - Colour: RW/O/BY/BW (Red/White, Orange, Black/Yellow, Black/White)

Standard Size

WM-CS-B-1A-RW

WM-CS-B-1A-BW

WM-CS-B-1A-BY

Bayonet, Bushing

WM-CS-E-1A-RW

WM-CS-E-1A-BW

WM-CS-E-1A-BY

Eye Ring, Bushing

WM-CS-E-1C-RW

WM-CS-E-1C-BW

WM-CS-E-1C-BY

Eye Ring, Bearing

Mini Size

WM-CS-E-1E-RW | Eye Ring, Bearing

WM-CS-E-1E-BW | Eye Ring, Bearing

WM-CS-E-1E-BY | Eye Ring, Bearing

Bearing version recommended





ROTAMARKA



WARNING MARKERS

Universal Joint | Eye Ring | Bearing

WM-CS-E-1D-RW

WM-CS-E-1D-BW

WM-CS-E-1D-BY

Vinyl Flag

WM-CS-B-1B-O | Bayonet

WM-CS-E-1B-O | Eye-Ring



**Ideal for
installation on
guy or stay wires**

**See also
Guy Guards**
Refer Section 2 - Page 5



**See also
Pole Markers**
Refer Section 7 - Page 1





LINE GUARDS

- Unique striped safety feature



- Stamped & rated to comply with ASTM Standard

- Robust design and construction backed by decades of engineering to ensure the highest quality & safety standards

- Eyelet in bell housing allows locking by cable ties & complies with OH&S requirements



- Weather resistant



- Class 2 & 3 options

- Rigid guards or exible style hose cater for most requirements

- Suitable for use on Power Lines & Wires as visual warning, mechanical protection and electrical insulation



Recommended Products

Lion Tails



DB45B | 2m x 45mm male/female lengths
PE, Yellow outer, Black inner safety feature
ASTM F 712, Class 2 15KV*



DB35B | 2m x 35mm male/female lengths
PE, Orange outer, Black inner safety feature
ASTM F 712, Class 3 26KV*

**Class 2
15KV**

**Class 3
26KV
(coming soon!)**

***Both phases covered**





LINE GUARDS

Tiger Tails®

Recommended Products



DB35A | 2.5m x 35mm



DB35ARB | 2.5m x 35mm



DB35ARB125 | 1.25m x 35mm



DB45A | 2.5m x 45mm



LS70 | 2m x 70mm



**ASTM F712
Class 2 15KV**



LINE GUARDS

Panther Tails



Unique 2 tone design

TPP15-Kit
Installation
tool kit for
TPP15 Rolls



TPP15 | 60m x 15mm roll | EVA Black outer, Yellow inner safety feature | Electrically tested to ASTM F 712 Class 2 15KV*

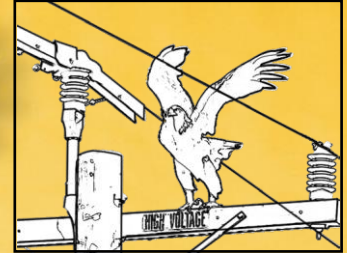
- 1. TPP20 | 3m x 20mm male / female lengths | HDPE, Black Outer, Yellow inner safety feature | ASTM F 712 Class 2 15KV*
- 2. TPP35 | 3m x 35mm male / female lengths | HDPE, Black Outer, Yellow inner safety feature | ASTM F 712 Class 2 15KV*



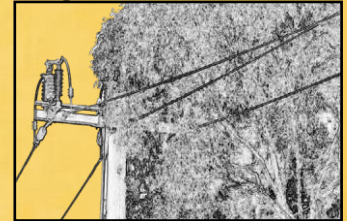
Class 2
15KV

*Both phases covered

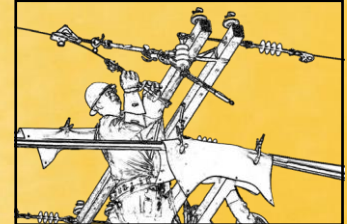
Wildlife protection



Tree protection



Personal protection





LINE GUARDS

Guy Guards

GG | 2m x 45mm | HDPE

*For Stay & Guy Wires
(not rated for electrical insulation)*



Jumper Wire Guards

IPEP | 10m x 35mm | EVA



*Flexible hose for covering Bonds,
Bridges & Jumper Wires*

**Electrically Tested to
ASTM F712
Class 2 15KV**





Recommended Products

POLE MARKERS & CAPS

Pole Markers

***Special Order Only**

- Designed to last 15 years +
- Excellent UV resistance
- Increases visibility of poles for both day and night conditions
- Textured surface to reduce adhesion of unwanted signs and labels
- Easy to install, Tek Screws or Band-It Strapping can be used.

Item No.	Size	Base Material	Base Colour	Reflector Quantity	Reflector Colour
PM6060GW	600x600mm	Polyethylene	Grey	6	White
PM6060GY	600x600mm	Polyethylene	Grey	6	Yellow
PM7060BY	700x600mm	Polyethylene	Black	8	Yellow
PM6030GW	600x300mm	Polyethylene	Grey	6	White
PM5030BY	500x300mm	Polyethylene	Black	6	Yellow



Excellent Low Light Visibility

Custom sizes available on request subject to MOQ





POLE MARKERS & CAPS



Pole Caps

- Designed to last 30 years +
- Excellent UV resistance
- Natural insulating properties
- Flexible/pliable material can bend and stretch to uneven pole sizes and shapes
- A range of sizes and shapes available
- Easy to install, Tek screws can be used

Item No.	Size	Base Material	Base Colour	Comments
PC130B	130x45mm	LDPE	Black	
PC150G	150x45mm	LDPE	Grey	
PC200B	200x100mm	LDPE	Black	
PC200G	200x100mm	LDPE	Grey	Comes with Bird Diverter
PC216Y	216x170mm	LDPE	Yellow	Comes with Velcro strap and is rated electrically

Custom sizes available subject to MOQ

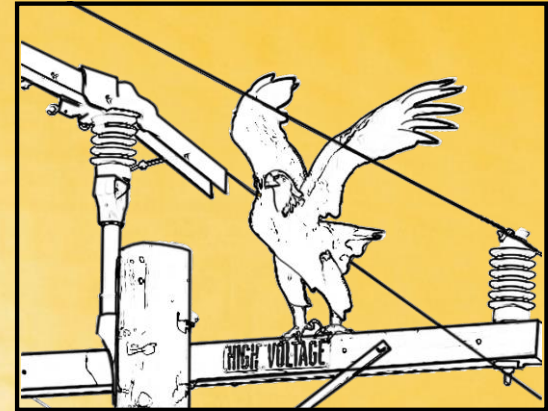




WILDLIFE PROTECTION

- Designed to cover over Crossarm mounted Insulators to help protect Birds and Critters from bridging between phases.
- Each unit should be installed on each Insulator/Phase on the Crossarm.
- Electrical faults induced by Birds and Critters can be deadly to the animals and potentially cause expensive outages.
- Two types, O set and centre depending on Insulator configuration.
- Excellent weathering resistance, time tested product.
- Easily snap clips together to form a sturdy installation

Wildlife protection



WPC-01

Wildlife Protection Cover,
450x133, Black, O set



WPC-C1

Wildlife Protection Cover,
450x130, Black, Centre



**Electrically Tested
to 25KV
Class 3**

**Can be used with
Panther Tails to
extend barrier**



WILDLIFE PROTECTION

Bird Blocker

- Designed to be installed on Power Lines anywhere along the span or near the cross arm to prevent birds from landing or settling on the lines.
- Suits most cable sizes.
- Will keep vertical orientation and face upwards.
- UV stabilised with good electrical insulation properties.
- Rubber stoppers used on either side of the Bird Blocker to x in place on the line.
- Can install multiple Bird Blockers “in series” along the line.
Where this is done, use rubber stoppers for every 10 Bird Blockers installed.

Item No.	Size	Base Material	Base Colour	Suits Cable Size
BB-BL	500x153mm	HDPE	Black	5mm –240mm
RS-BL	35x26mm	EPDM	Black	5mm –240mm

Parameter	Results (BB-B)
Withstand voltage	15KV for 1 minute
Heat resistance	No cracking or other damage at 60 degrees C
Cold resistance	No cracking or other damage at 20 degrees C
Crushing test	30N for 1 minute



BB-BL



RS-BL



**For
Bird Diverters**
Refer to Section 1 - Page 3





NOTES:

